

JMS581DL Online Upgrade Instructions

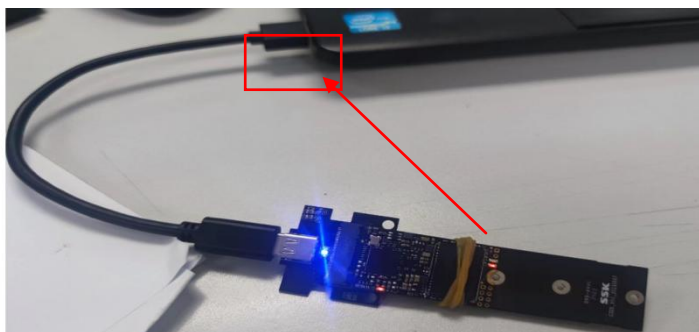
Firmware Burning Test Procedure (Please refer to the following document and images):

Note: This guide is specifically for ICs with the marking JMS581DL.

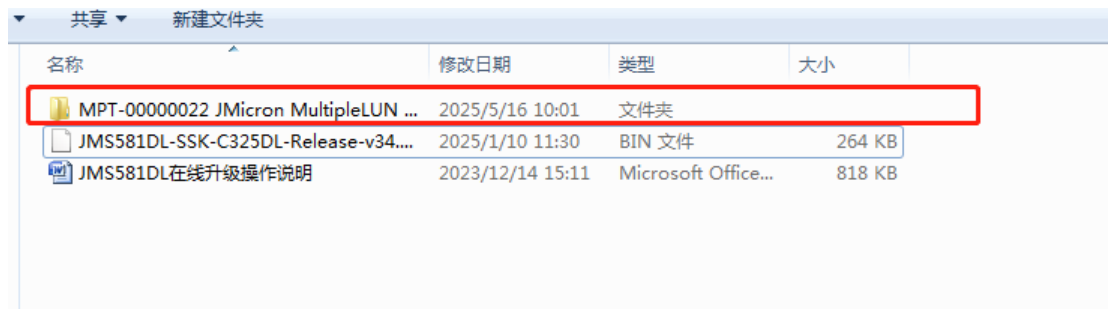


Prepare the latest firmware file: [JMS581DL_DualProtocol-Release-v04.02.00.06-20251113.bin](#)

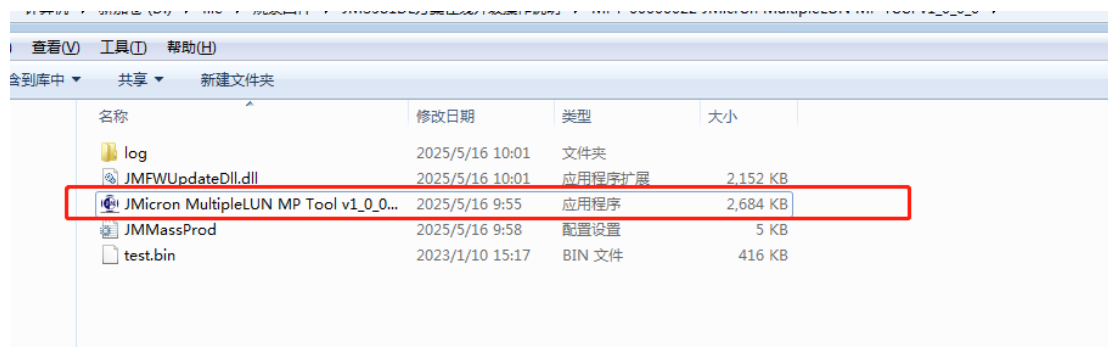
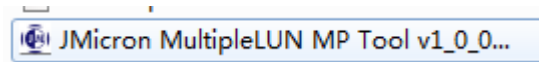
1. Connect the device enclosure containing the SSD to a computer USB port as shown below:



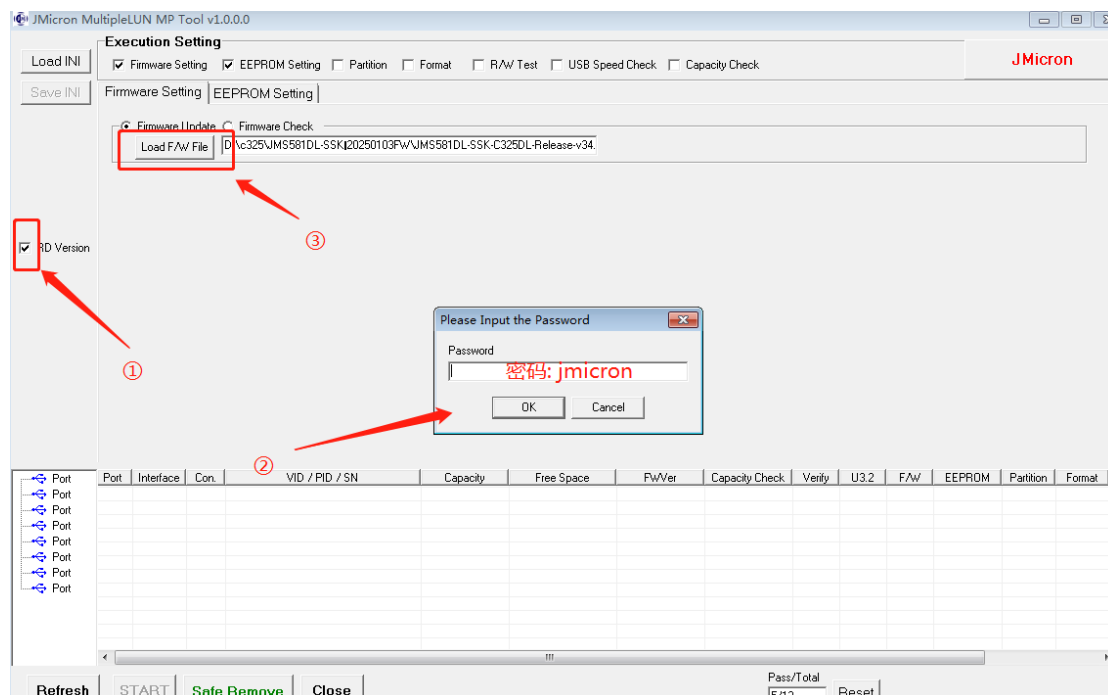
2. Double-click the tool “MPT-00000022 JMicron MultipleLUN MP Tool v1_0_0_0”,
The following interface will appear:



3. Double-click the tool icon to launch it.
The main application window will open



4. Click the ☒ RD Version button.
Enter the password **jmicron**(must be lowercase) and select **OK**, as shown below:

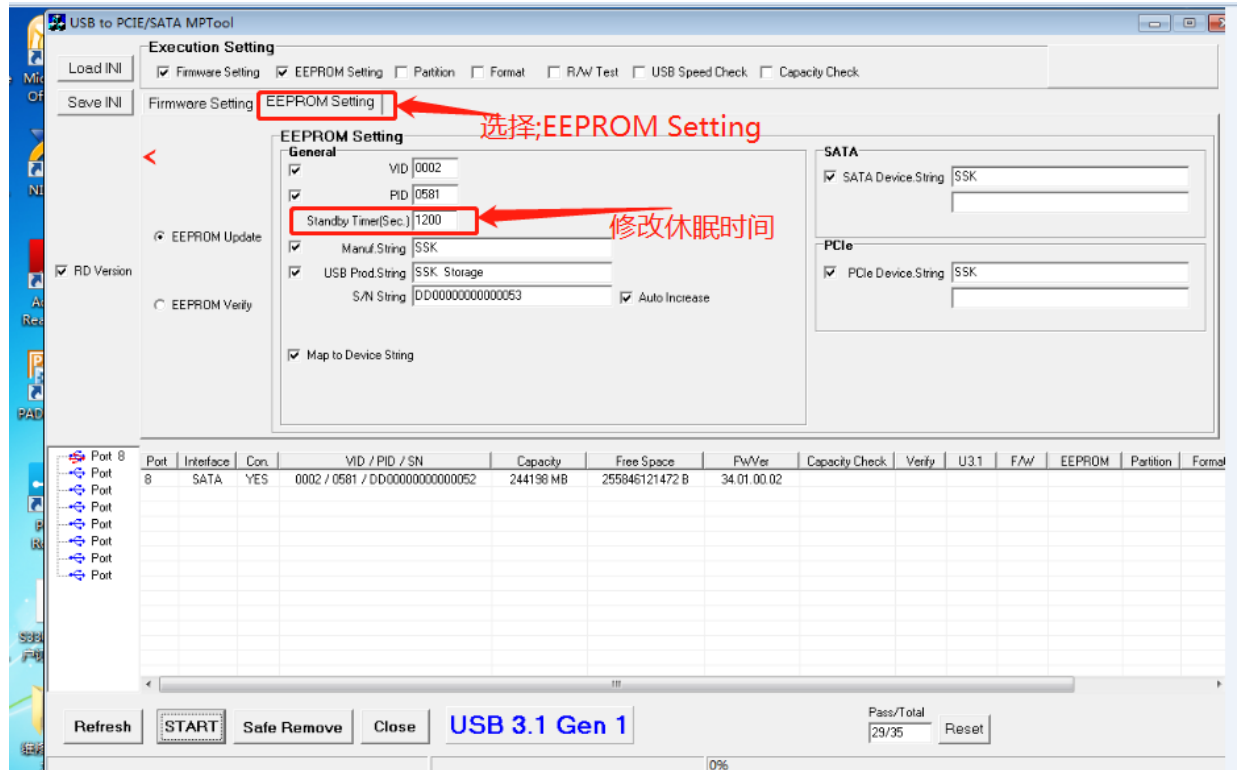


5. Once the device is connected to the PC, the Tool will display the detected device information.

—Select the **EEPROM Setting** tab.

—Locate the **Standby Timer (Sec.)** field and Modify the value as needed: "Sec" means seconds.

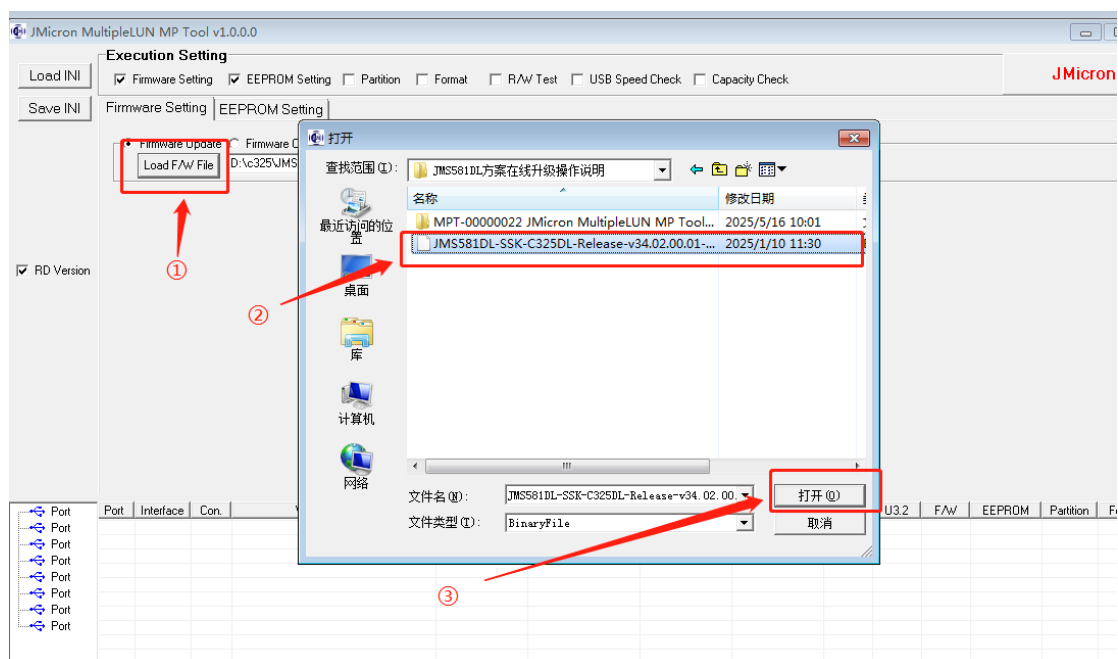
To set a hibernation time, enter a value between 60 and 1200 seconds, etc. To disable hibernation, set the value to 0 as shown below



6. Select the **Firmware Setting** tab to return.

Click the **Load F/W File** button to start loading the firmware file:

JMS581DL_DualProtocol-Release-v04.02.00.06-20251113.bin. Click Open as shown below



7. Click the **START** button to begin burning the firmware.

A successful burn will be indicated by a **PASS** message, as shown below:

